



## Homesite 13 | 1621 Legacy Ridge Lane

\$2,399,000

6,096 SF Finished

4 Bedrooms | 7 Full Baths

First Floor Owner's Retreat | Guest Suite/Study

3 Car Garage

### Exterior

- Craftsman-style architecture featuring stone accents and metal seam roof highlights
- Welcoming double front doors open to a barrel-vaulted covered porch
- Expansive rear screened porch with Skyview retractable screens, built-in grill area, outdoor heaters, and a cozy fireplace
- Spacious three-car garage providing generous parking and storage solutions
- Ideal lot for a future pool oasis
- Situated on a scenic 1.60-acre homesite



Grand Highland  
ESTATES

[www.GrandHighlandLiving.com](http://www.GrandHighlandLiving.com)

919-457-9002 | [grandhighland@morganwomblegroup.com](mailto:grandhighland@morganwomblegroup.com)

Prices and specifications subject to change without notice. 5/13/25

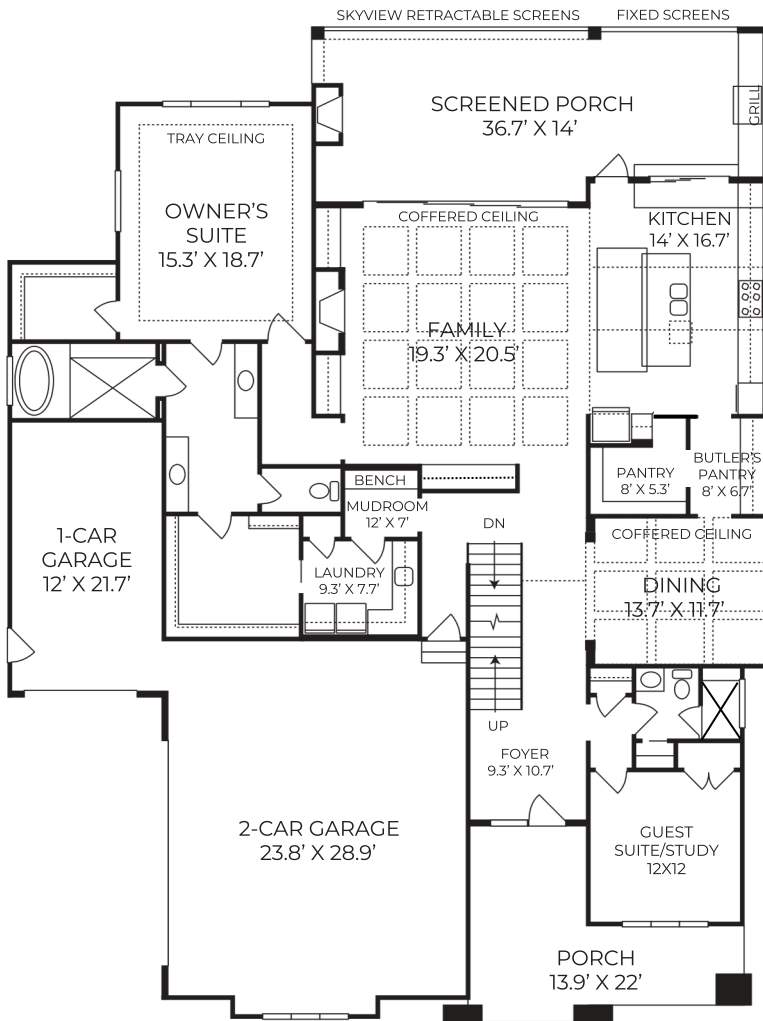


### Interior

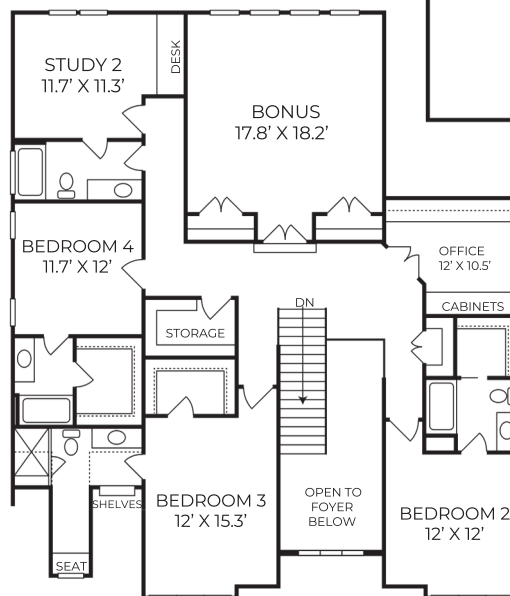
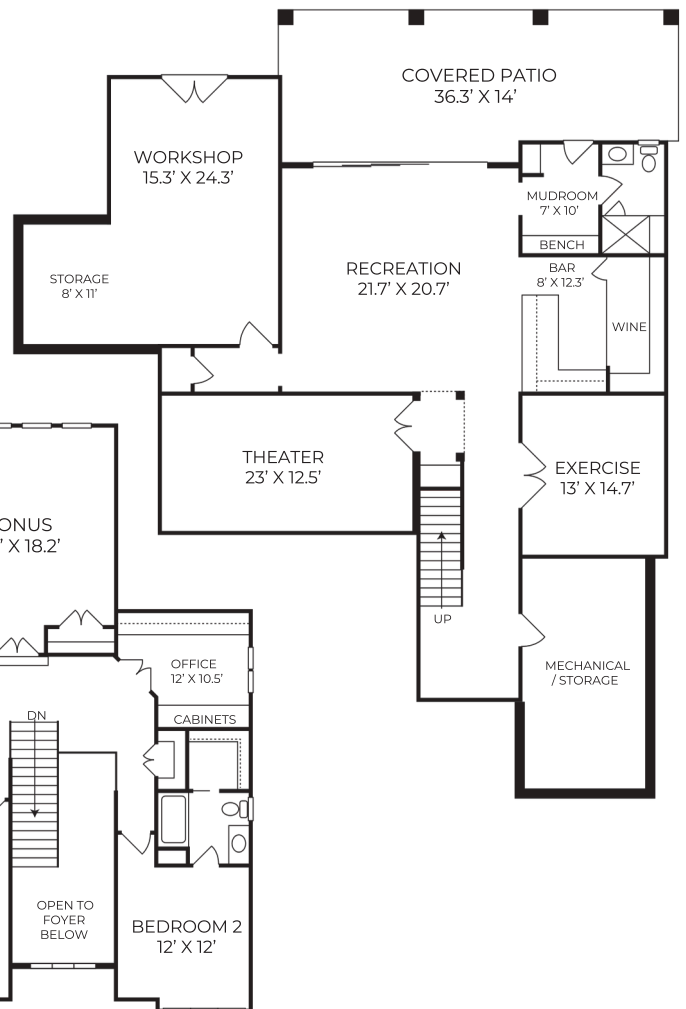
- Walk-out finished basement includes a recreation room, wet bar, home theater, fully equipped fitness room, and workshop
- First-floor owner's retreat with spa-inspired bath, soaking tub, walk-in shower, dual walk-in closets, and direct access to laundry room
- Private main-level study or guest suite with oversized windows offering abundant natural light
- Gourmet kitchen outfitted with designer appliances, a large island with seating, walk-in pantry, a butler's pantry, and pass through window to covered porch
- Formal dining room with coffered ceiling, seamlessly connected to the kitchen through the butler's pantry
- Family room features a coffered ceiling, fireplace, built-ins, and custom wine rack
- Sliding glass doors off the family room open to a generous covered porch
- Upper-level bedrooms each with en suite baths and walk-in closets, plus a game room, private study with attached bath, and a pocket office



morgan womble group  
REAL ESTATE  
COMPASS



## BASEMENT



## EDK Design Build Grand Highland Estates Homesite 13