



Homesite 3 | 8909 Grand Highland Way

\$1,695,000

4,152 SF | 4 Bedrooms | 4 Full Baths
First Floor Owner's Retreat | Private Guest Suite
3 Car Garage

Exterior

- Captivating modern craftsman estate featuring a blend of brick and lap siding with a sleek metal seam roof
- Welcoming covered front porch highlighted by elegant double entry doors
- Cozy rear screened porch with a fireplace, seamlessly accessible through glass slider doors from the family and dining rooms
- Convenient two-car side-entry garage paired with a one-car front-entry garage
- Beautifully situated on a 0.950-acre homesite for ultimate privacy and charm



Grand Highland
ESTATES

www.GrandHighlandLiving.com

919-457-9002 | grandhighland@morganwomblegroup.com

Prices and specifications subject to change without notice. 12/15/24

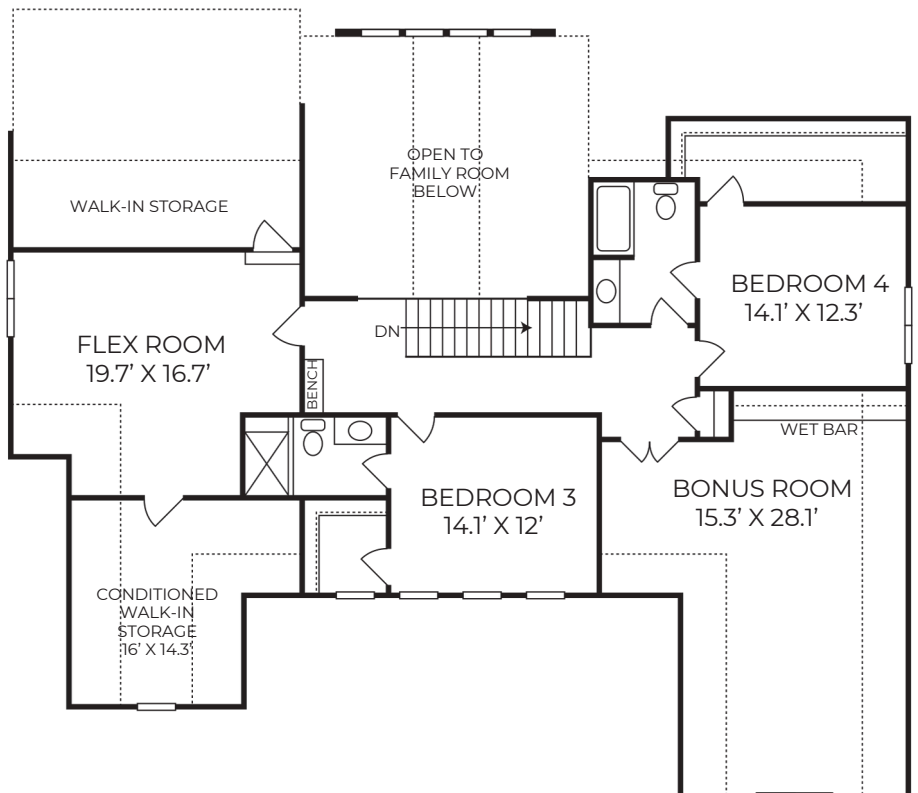
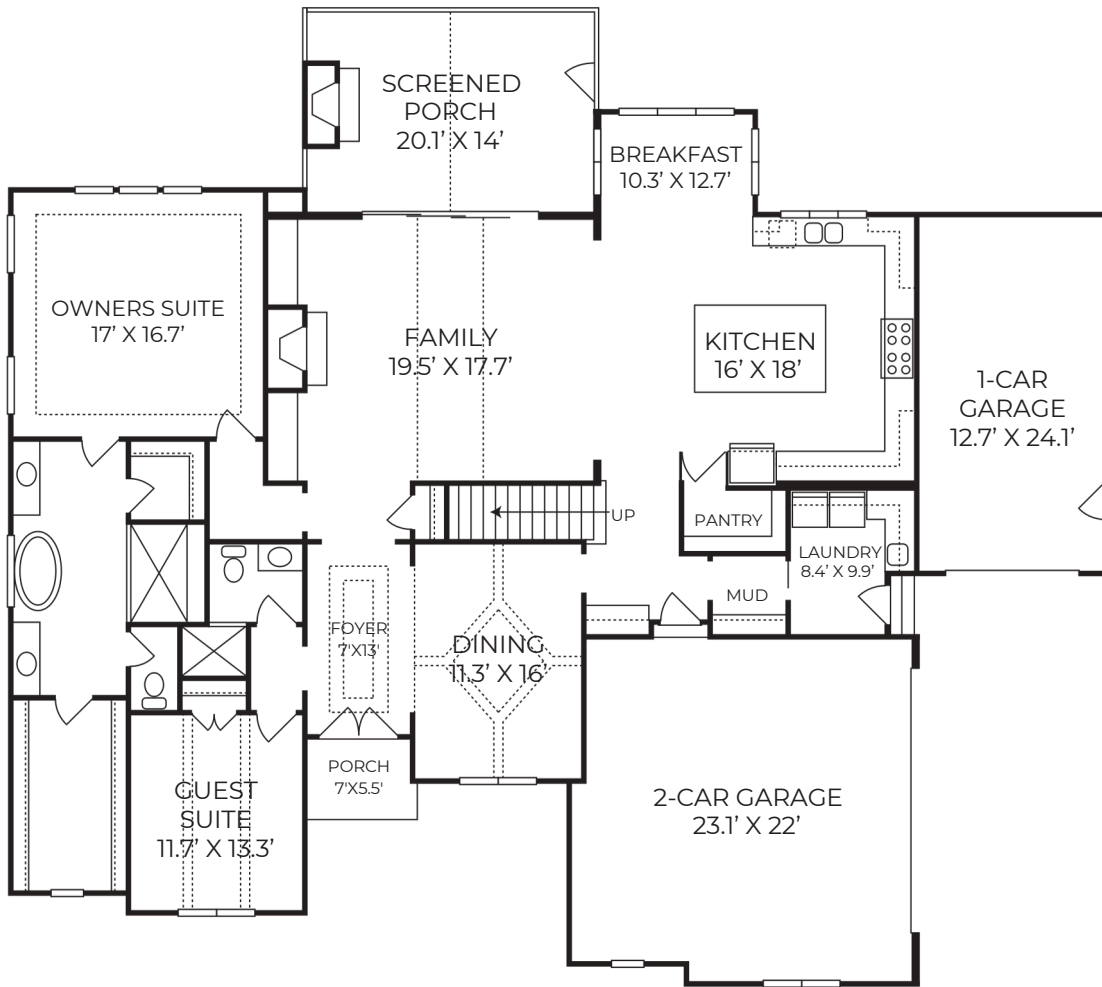


Interior

- Elegant first-floor owner's retreat with a tray ceiling, spa-like bath featuring a walk-in shower, free-standing tub, and his-and-hers walk-in closets
- Private first-floor guest suite or study with a charming beamed ceiling
- Spacious family room with a soaring vaulted two-story ceiling, fireplace, built-ins, and sliding glass doors leading to the screened porch
- Gourmet chef's kitchen with a large island and bar seating, designer appliances, a hidden-door pantry, and a bright breakfast room
- Convenient first-floor laundry room and mudroom located near the garage and side entrance
- Two second-floor bedrooms, each with an en suite bath and walk-in closet
- Versatile second-floor flex room for a variety of uses
- Expansive bonus room with a wet bar, ideal for entertaining or relaxing
- Two walk-in storage spaces providing ample additional storage



morgan womble group
REAL ESTATE
COMPASS



Braswell Custom Homes
Grand Highland Estates Homesite 3

The builder reserves the right to revise noted specifications or substitute features, architectural details and materials. Illustrations and floor plans are for discussion purposes only and not part of a legal contract. Room sizes are approximate. 5/29/2024