



Grand Highland

ESTATES

Homesite 12

1613 Legacy Ridge Lane
\$TBD

6,631 SF Finished

4 Bedrooms | 4 Full Baths | 2 Half Baths
First Floor Owner's Retreat
3 Car Garage | Expansive Workshop

Exterior

- A seamless blend of Modern and Georgian architecture
- Charming porch entrance highlighted by four stately columns
- Rear covered porch with a grilling area overlooking a spacious pool
- Three-car side entry garage with a front-facing attached workshop
- Nestled on a 2.19-acre lot

Interior

- Luxurious first-floor owner's retreat featuring a vaulted ceiling, personal breakfast bar, spa-like bath with freestanding soaking tub, and expansive dressing room with laundry
- Private study on the main level with custom built-ins

- Gourmet kitchen equipped with a large island bar, designer appliances, and a scullery pantry
- Spacious, open-concept family and dining area with a fireplace and built-ins, seamlessly flowing through sliding doors to the rear covered porch
- Three second-floor bedrooms, each with walk-in closets, plus a generously sized bonus room
- Second-floor laundry room with space for homework or craft stations
- Expansive home studio with ensuite bath and mini kitchen, accessible from the garage or bonus room, perfect for work or creative projects
- Oversized garage and workshop space with abundant storage



www.GrandHighlandLiving.com

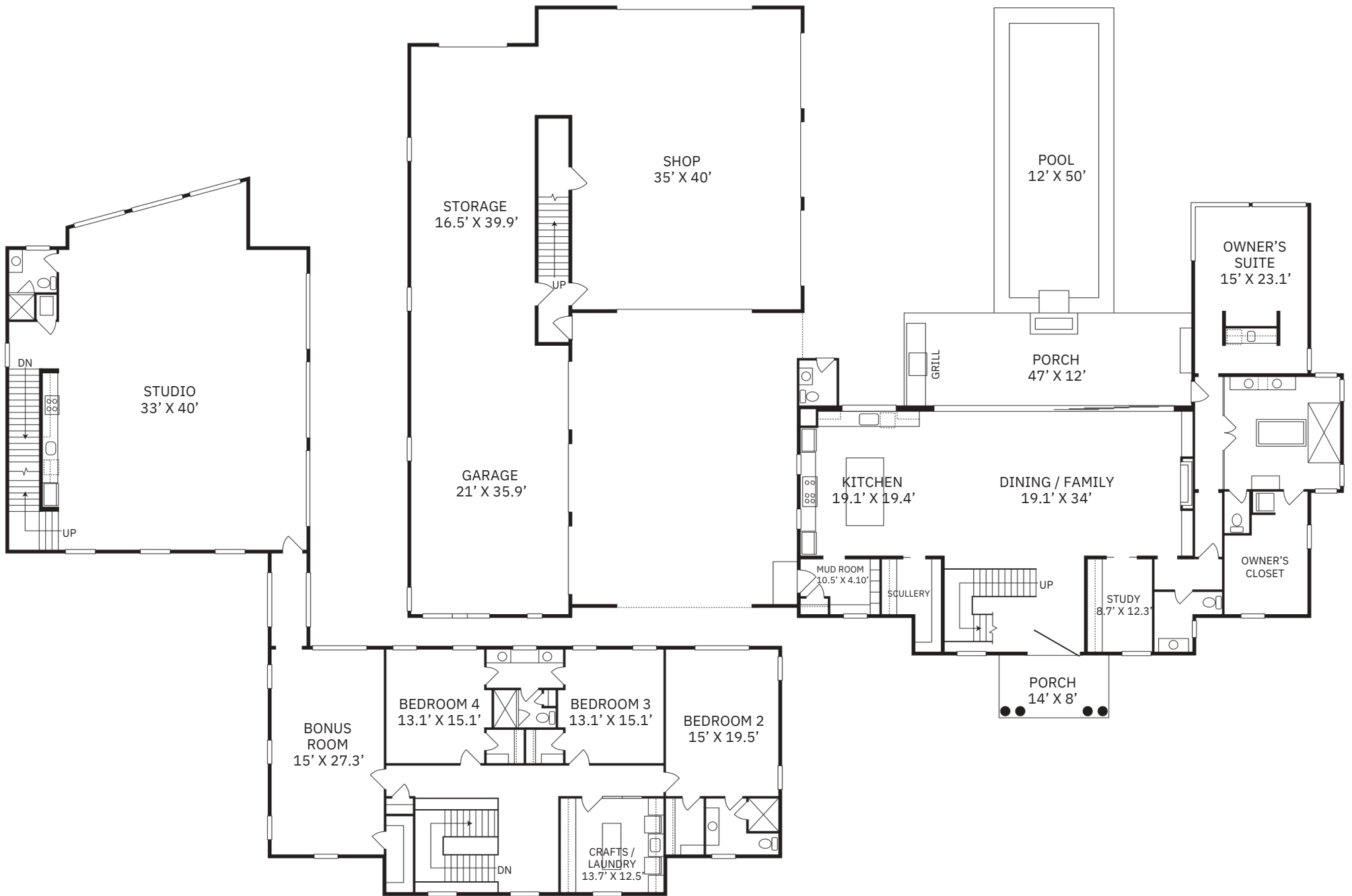
919-457-9002 | grandhighland@morganwomblegroup.com

Prices and specifications subject to change without notice. 10/22/24



morgan womble group

REAL ESTATE
COMPASS



Deep South
Grand Highland Estates Homesite #12