



Homesite 12 | 1613 Legacy Ridge Lane

\$TBD

6,631 SF Finished
4 Bedrooms | 4 Full Baths | 2 Half Baths
First Floor Owner's Retreat | Expansive Workshop
3 Car Garage | Custom Pool

Exterior

- A harmonious blend of Modern and Georgian architectural styles
- Inviting front porch accented by four elegant, stately columns
- Rear covered porch with a built-in grilling area, overlooking a stunning pool
- Three-car side-entry garage complemented by a front-facing attached workshop
- Beautifully set on a sprawling 2.19-acre lot



Grand Highland
ESTATES

www.GrandHighlandLiving.com

919-457-9002 | grandhighland@morganwomblegroup.com

Prices and specifications subject to change without notice. 12/15/24

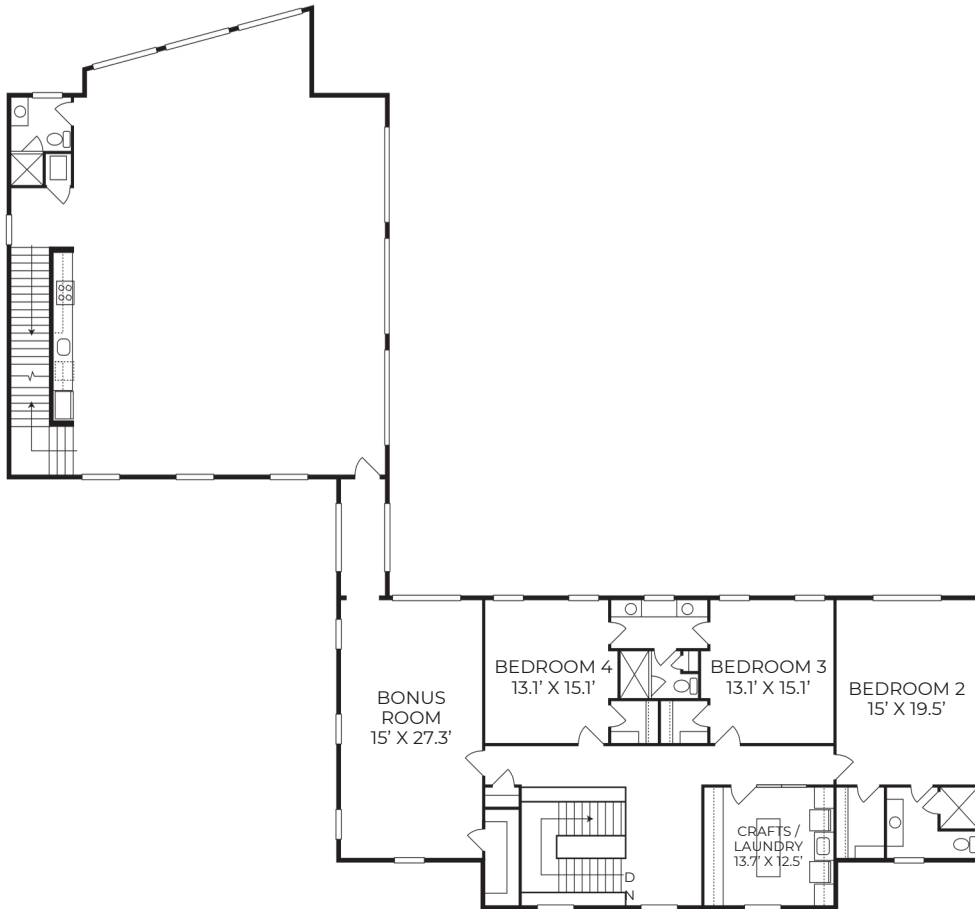
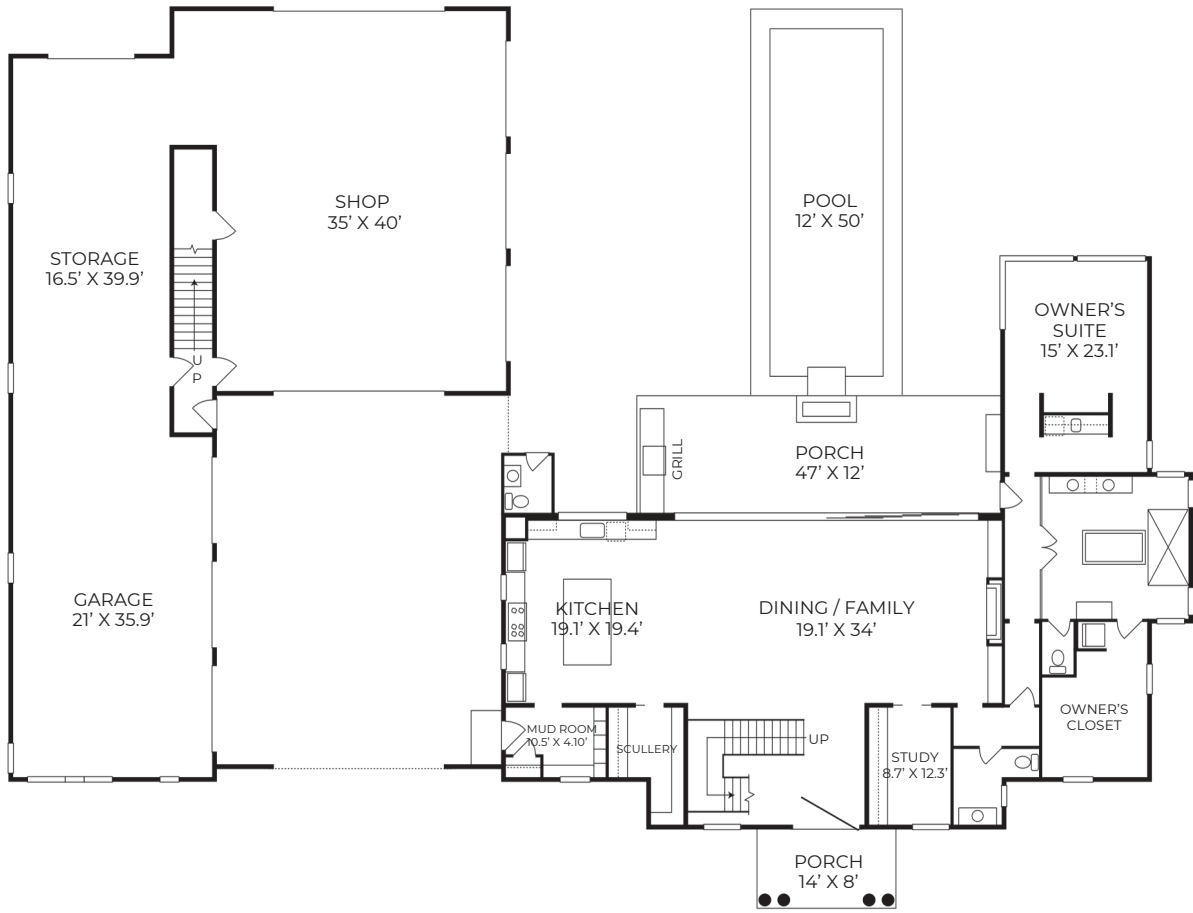


Interior

- Luxurious first-floor owner's retreat featuring a vaulted ceiling, personal breakfast bar, spa-like bath with freestanding soaking tub, and expansive dressing room with laundry
- Private study on the main level with custom built-ins
- Gourmet kitchen equipped with a large island bar, designer appliances, and a scullery pantry
- Spacious, open-concept family and dining area with a fireplace and built-ins, seamlessly flowing through sliding doors to the rear covered porch
- Three second-floor bedrooms, each with walk-in closets, plus a generously sized bonus room
- Second-floor laundry room with space for homework or craft stations
- Expansive home studio with ensuite bath and mini kitchen, accessible from the garage or bonus room, perfect for work or creative projects
- Oversized garage and workshop space with abundant storage



morgan womble group
REAL ESTATE
COMPASS



Deep South
Grand Highland Estates Homesite 12