



## Homesite 24 | 1725 Legacy Ridge Lane

\$1,995,000



5,118 SF Finished  
4 Bedrooms | 4 Full Baths | 1 Half Baths  
First Floor Owner's Retreat | Private Guest Suite  
3-Car Garage | Partially Finished Basement

### Exterior

- Transitional European-style home with modern Tudor influences offers a timeless yet current aesthetic
- A steep-pitched gable with stone and vertical wood accents creates a striking architectural statement
- The expansive rear covered porch with a stone fireplace invites year-round outdoor living
- Includes a 1-car front-facing garage and a 2-car side-facing garage for functional and flexible parking
- Situated on a 1.92-acre homesite

### Interior

- First-floor owner's retreat offers vaulted ceilings, a spa-like bath with soaking tub and walk-in shower, and a spacious walk-in closet
- Private main-level guest suite includes an en suite bath, walk-in shower, and generous closet space
- Gourmet kitchen with designer appliances, a large island, and walk-in scullery flows seamlessly into a vaulted dining room
- Family room features a fireplace, built-ins, and direct access to the covered porch for effortless indoor-outdoor living
- Each upper-level bedroom includes an en suite bath and an oversized walk-in closet for ultimate comfort
- A large upstairs bonus room and built-in study area offer flexible space for work, play, or relaxation
- Main-level laundry room includes a convenient folding island and ample storage
- Partially finished basement features an oversized recreation room and additional unfinished space for future expansion



Grand Highland  
ESTATES

[www.GrandHighlandLiving.com](http://www.GrandHighlandLiving.com)

919-457-9002 | [grandhighland@morganwomblegroup.com](mailto:grandhighland@morganwomblegroup.com)

*Prices and specifications subject to change without notice. 04/23/26*



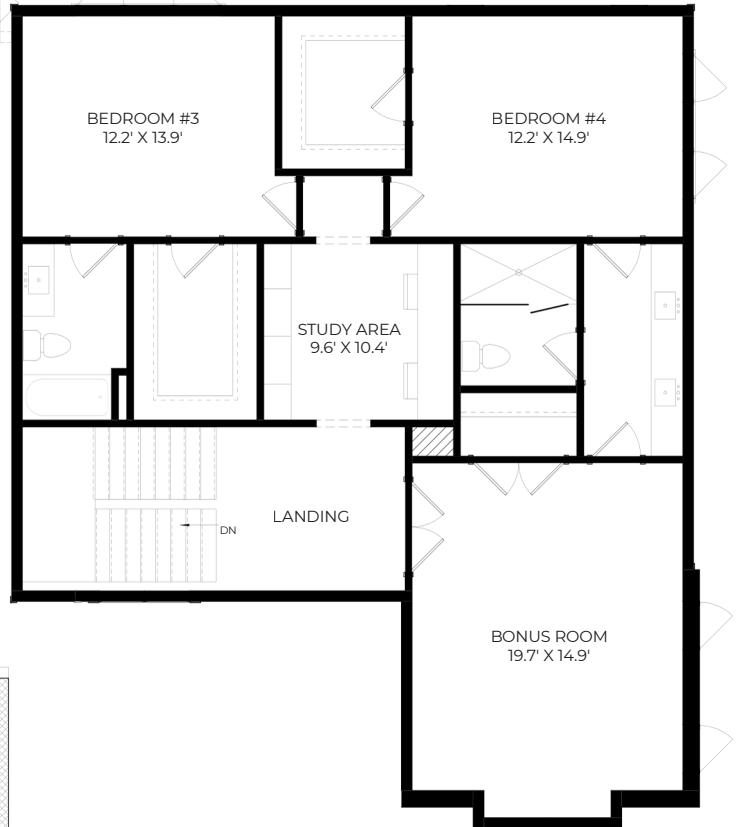
morgan womble group  
REAL ESTATE

COMPASS

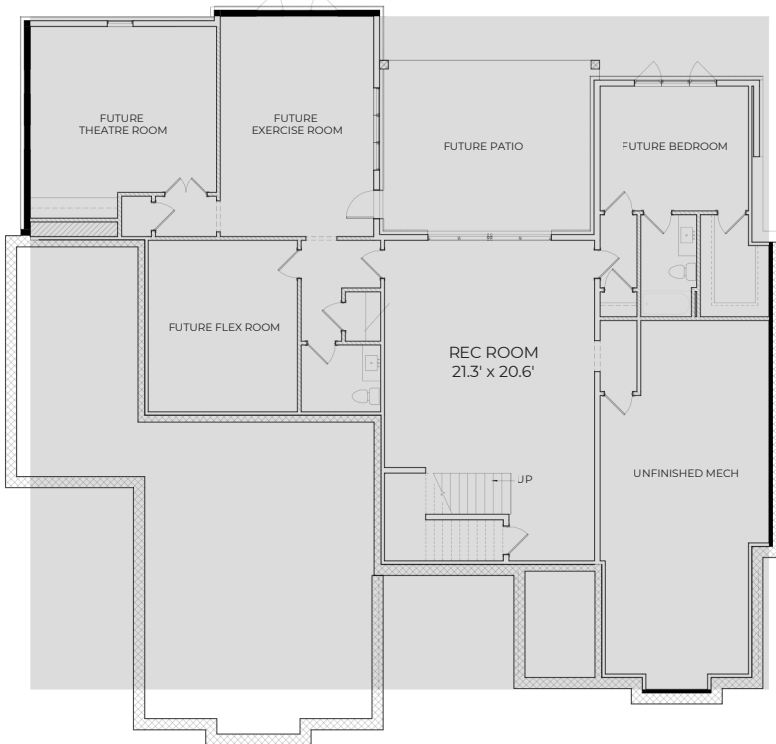
FIRST FLOOR



SECOND FLOOR



BASEMENT



Exeter Building Company  
**Grand Highland Estates Homesite 24**