



Homesite 24 | 1725 Legacy Ridge Lane

\$1,995,000

4,714 SF Finished

4 Bedrooms | 4 Full Baths | 1 Half Bath

First Floor Owner's Retreat | Private Guest Suite

3-Car Garage | Partially Finished Basement

Exterior

- Transitional European-style home with modern Tudor influences offers a timeless yet current aesthetic
- A steep-pitched gable with stone and vertical wood accents creates a striking architectural statement
- The expansive rear covered porch with a stone fireplace invites year-round outdoor living
- Includes a 1-car front-facing garage and a 2-car side-facing garage for functional and flexible parking
- Situated on a 1.92-acre homesite



Grand Highland
ESTATES

www.GrandHighlandLiving.com

919-457-9002 | grandhighland@morganwomblegroup.com

Prices and specifications subject to change without notice. 06/27/25



EXETER
BUILDING COMPANY LLC
WWW.EXETERBUILDING.COM

Interior

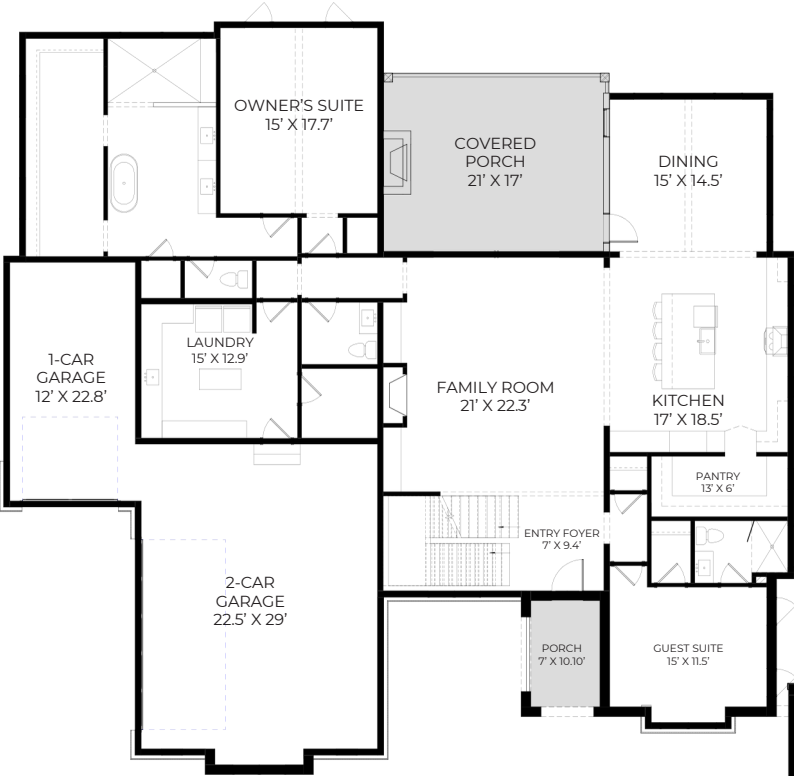
- First-floor owner's retreat offers vaulted ceilings, a spa-like bath with soaking tub and walk-in shower, and a spacious walk-in closet
- Private main-level guest suite includes an en suite bath, walk-in shower, and generous closet space
- Gourmet kitchen with designer appliances, a large island, and walk-in pantry flows seamlessly into a vaulted dining room
- Family room features a fireplace, built-ins, and direct access to the covered porch for effortless indoor-outdoor living
- Each upper-level bedroom includes an en suite bath and an oversized walk-in closet for ultimate comfort
- A large upstairs bonus room and built-in study area offer flexible space for work, play, or relaxation
- Main-level laundry room includes a convenient folding island and ample storage
- Partially finished basement features an oversized recreation room and additional unfinished space for future expansion



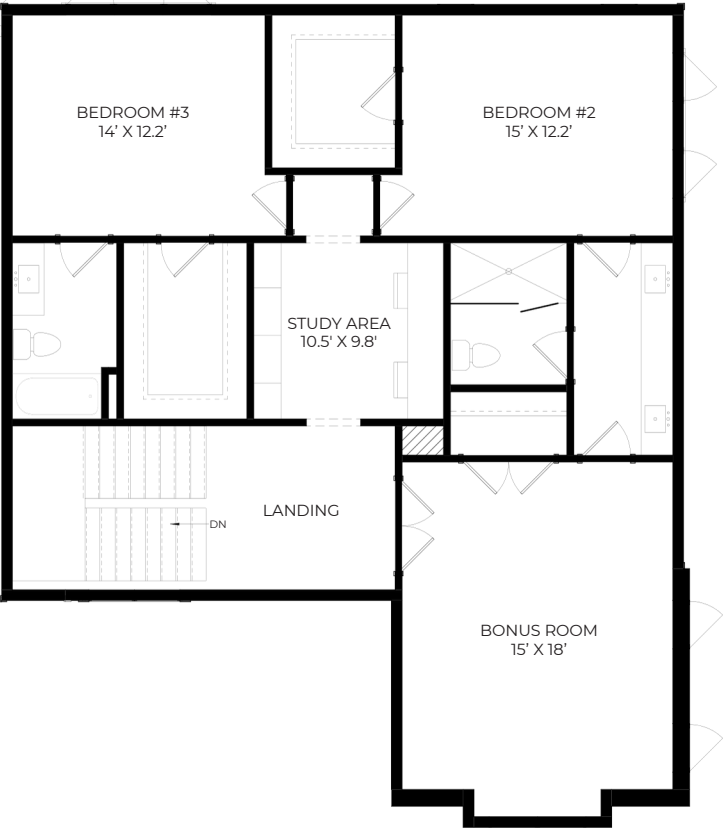
morgan womble group
REAL ESTATE

COMPASS

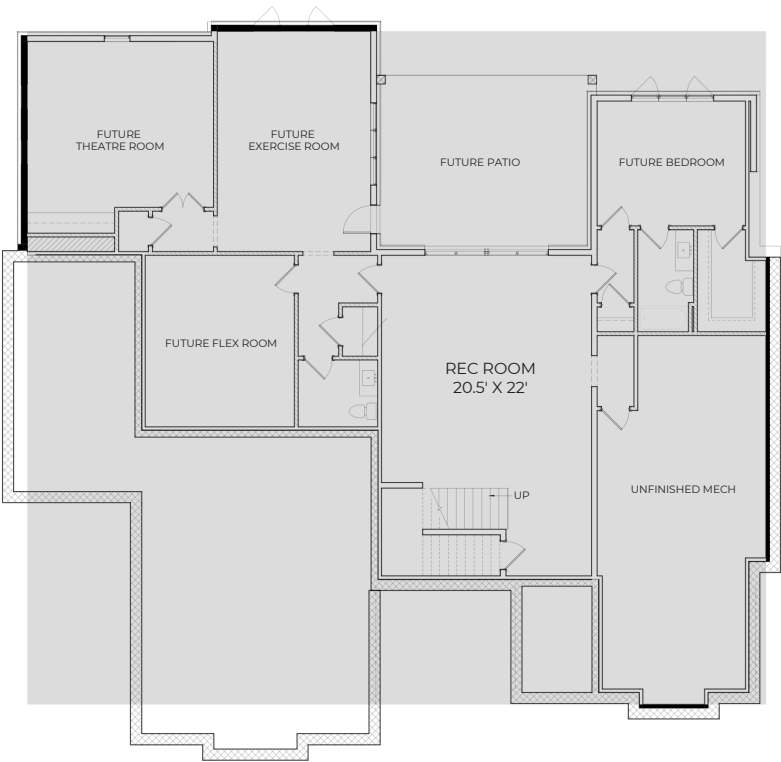
FIRST FLOOR



SECOND FLOOR



BASEMENT



Exeter Building Company
Grand Highland Estates Homesite 24

The builder reserves the right to revise noted specifications or substitute features, architectural details and materials. Illustrations and floor plans are for discussion purposes only and not part of a legal contract. Room sizes are approximate. 06/27/25